



CD298 Polyclonal Antibody

Catalog No	YP-Ab-16529
Isotype	IgG
Reactivity	Human;Rat;Mouse;
Applications	WB;ELISA
Gene Name	ATP1B3
Protein Name	Sodium/potassium-transporting ATPase subunit beta-3
Immunogen	The antiserum was produced against synthesized peptide derived from the C-terminal region of human ATP1B3. AA range:222-271
Specificity	CD298 Polyclonal Antibody detects endogenous levels of CD298 protein.
Formulation	Liquid in PBS containing 50% glycerol, 0.5% BSA and 0.02% sodium azide.
Source	Polyclonal, Rabbit,IgG
Purification	The antibody was affinity-purified from rabbit antiserum by affinity-chromatography using epitope-specific immunogen.
Dilution	Western Blot: 1/500 - 1/2000. ELISA: 1/10000. Not yet tested in other applications.
Concentration	1 mg/ml
Purity	≥90%
Storage Stability	-20°C/1 year
Synonyms	ATP1B3; Sodium/potassium-transporting ATPase subunit beta-3; Sodium/potassium-dependent ATPase subunit beta-3; ATPB-3; CD298
Observed Band	36kD
Cell Pathway	Apical cell membrane ; Single-pass type II membrane protein . Basolateral cell membrane ; Single-pass type II membrane protein . Melanosome . Identified by mass spectrometry in melanosome fractions from stage I to stage IV.
Tissue Specificity	Lung,Placenta,Uterus,
Function	function:This is the non-catalytic component of the active enzyme, which catalyzes the hydrolysis of ATP coupled with the exchange of Na(+) and K(+) ions across the plasma membrane. The exact function of the beta-3 subunit is not known.,similarity:Belongs to the X(+)/potassium ATPases subunit beta family.,subcellular location:Identified by mass spectrometry in melanosome fractions from stage I to stage IV.,subunit:Composed of three subunits: alpha (catalytic), beta and gamma.,
Background	The protein encoded by this gene belongs to the family of Na ⁺ /K ⁺ and H ⁺ /K ⁺ ATPases beta chain proteins, and to the subfamily of Na ⁺ /K ⁺ -ATPases. Na ⁺ /K ⁺ -ATPase is an integral membrane protein responsible for establishing and maintaining the electrochemical gradients of Na and K ions across the plasma membrane. These gradients are essential for osmoregulation, for sodium-coupled



transport of a variety of organic and inorganic molecules, and for electrical excitability of nerve and muscle. This enzyme is composed of two subunits, a large catalytic subunit (alpha) and a smaller glycoprotein subunit (beta). The beta subunit regulates, through assembly of alpha/beta heterodimers, the number of sodium pumps transported to the plasma membrane. The glycoprotein subunit of Na⁺/K⁺ -ATPase is encoded by multiple genes. This gene encodes a beta 3 subunit. This gene encodes a beta 3 subunit.

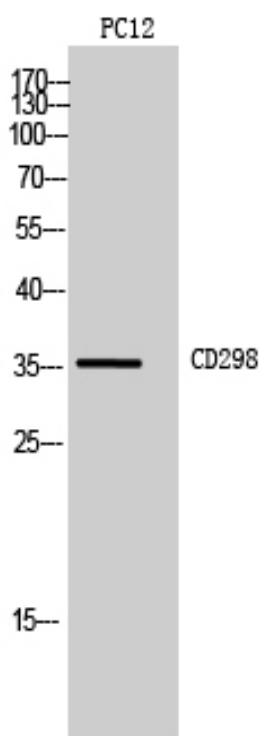
matters needing attention

Avoid repeated freezing and thawing!

Usage suggestions

This product can be used in immunological reaction related experiments. For more information, please consult technical personnel.

Products Images



Western Blot analysis of PC12, NIH-3T3 cells using CD298 Polyclonal Antibody. Secondary antibody(catalog#:RS0002) was diluted at 1:20000